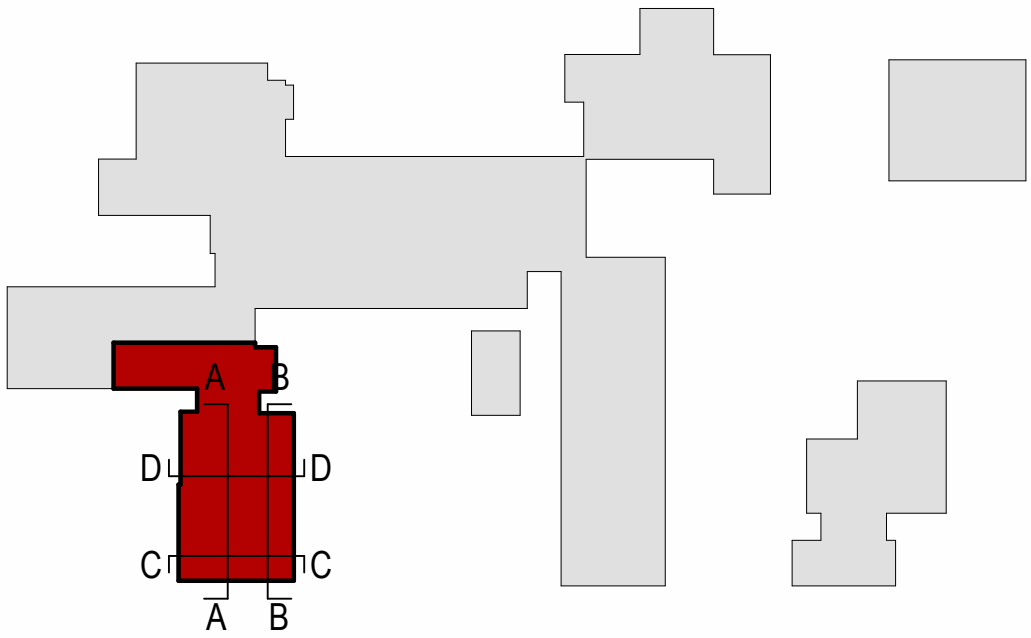
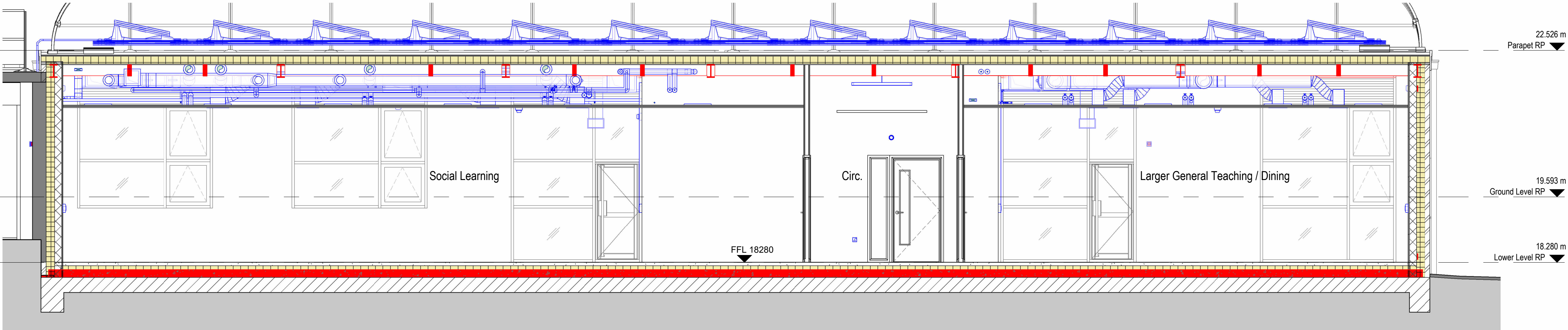


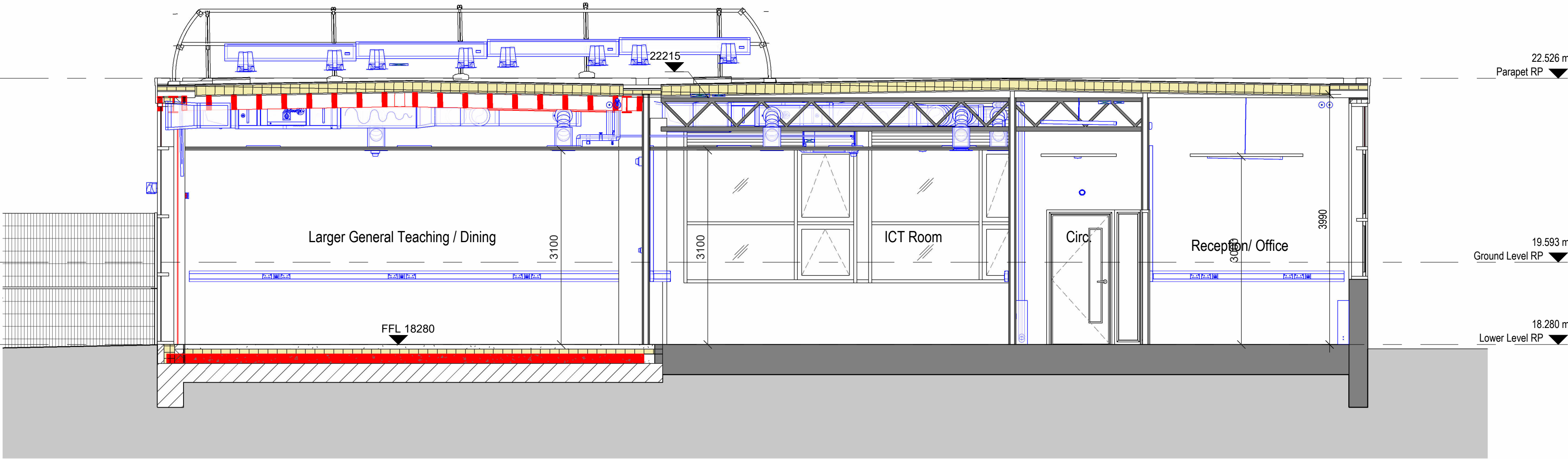
Proposed RP Section A-A
1 : 50 @ A1



Key Plan
1 : 1250 @ A1



Proposed RP Section B-B
1 : 50 @ A1



Proposed RP Section C-C
1 : 50 @ A1

P04	Updated Pack Issued for Information	09/05/25	MT	JP
P03	Issue for Information	17/04/25	MT	JP
P02	Provisional Stage 3 Issue	04/04/25	GC/MT	PEH
P01	Initial Issue	28/02/25	JP	PEH

Revision	Description	Date	Drawn	Checked
----------	-------------	------	-------	---------

Halliday Meecham Architects Limited

111 Piccadilly Manchester M1 2HY
+44 (0)161 661 5566

4 Devonshire Street London W1W 5DT
+44 (0)203 440 5175

hma@hallidaymeecham.com
www.hallidaymeecham.com



Client: Dean Trust						
Project: Broadoak School						
Phase/Location: Warburton Ln, Partington, Manchester M31 4BU						
Drawing: Proposed Resource Provision Sections - Sheet 1						
Scale @ A1 1:50	Scale @ A3 1:100	Date: 01/30/25	Drawn: GC	Checked: JP	Job No. 5705	Drawing No. 20301-RP
<div>Scale</div> <div><div><div></div><div></div><div></div><div></div><div></div></div><div>01.501m2m</div></div>				<div>Stage / Suitability:</div> <div>Preliminary</div>		<div>Status:</div>
Drawing Ref. 5705-HMA-RP-ZZ-DR-A-20301-RP						Revision P04