

# Proposed new Teaching and Sports Building at Blessed Thomas Holford Catholic College



## Location Plan





# Proposed new Teaching and Sports Building at Blessed Thomas Holford Catholic College



## Why do we need this new building at BTH?

Blessed Thomas Holford Catholic College has been oversubscribed for a number of years and although a number of classrooms have been added recently, there is now a significant shortfall of accommodation in order to maintain current admission numbers. The school have been teaching children in spaces which are not designated classrooms and therefore the existing building capacity is close to being exceeded. The school does not have a sports hall, which forces students to travel off-site to access indoor sports which impacts on curriculum time. Outdoor sports facilities are also limited for a school of this size. It doesn't have its own

playing fields and leases Coronation fields from the Council.

The Council have agreed to fund the new build which consists of 14 classrooms, a Sports Hall and associated WC and changing facilities and have commissioned Galliford Try and their architects Pozzoni, to design and build it.

The location of the new building has not been decided yet and that is why we are consulting today. We are currently considering a number of options either on the playground or the adjacent open space off Welman Way and the pro's and

cons of each are on the plans.

The new Published Admission Number (PAN) will be 290 and 3 year groups have already filled to this number, therefore the school expects a further 100 students over the next two years. The school has good public transport links and 86% of children attending travel by public transport or walk. Staffing is expected to increase by 3 full time equivalent staff and 16 additional parking spaces are planned on the site.

*Thank you all for attending this event, your comments on the proposal would be greatly appreciated.*



### Proposed Timeline:

Initial development of proposals	Winter 2019/2020
Informal consultation session 1	22nd January 2020
Informal consultation session 2	Spring 2020
Proposed planning application submission (with formal consultation)	Spring 2020
Start of construction subject to planning approval	Summer 2020
New building planned to open	Autumn 2021

### Have your say;

We would welcome your comments on the current proposals. Comments can be made by;

- Completing a feedback form at the consultation,
- Visiting the Council website at <https://trafford.citizenspace.com/children/bthexpansionproposal> where you can fill in an online survey (from Thursday 23rd January 2020),
- Emailing: [schoolprojects@trafford.gov.uk](mailto:schoolprojects@trafford.gov.uk)
- Or writing to; **Schools Capital Projects Team,  
Trafford Council,  
Waterside House,  
Sale, M33 7ZF**

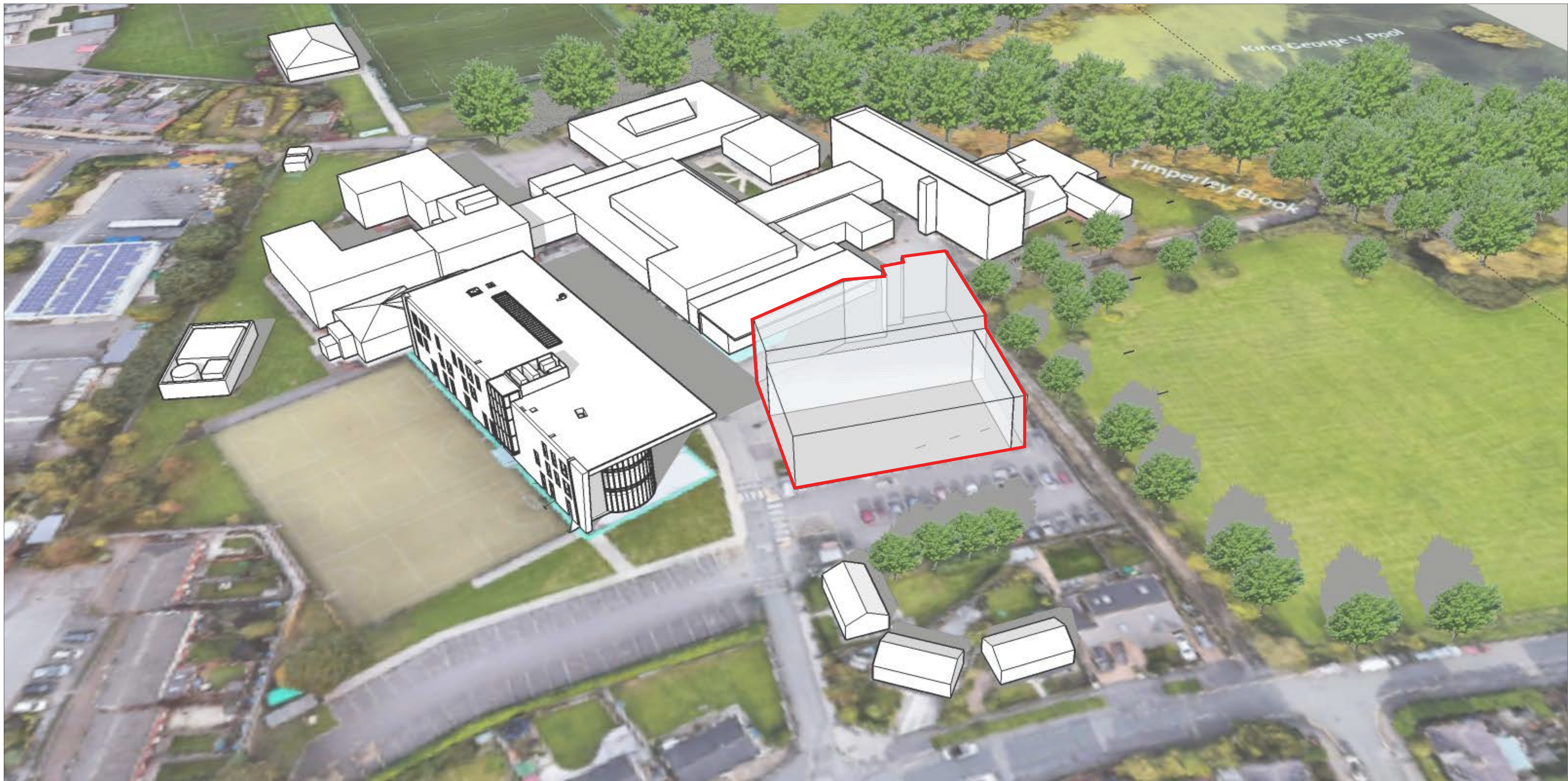
The consultation closes on Wednesday 5th February 2020.





# Proposed new Teaching and Sports Building at Blessed Thomas Holford Catholic College

## Proposed Location 1 - Schools Hard Play Area



Indicative massing model of option 1 location



### Advantages of this location:

- Within site boundary
- Clean site (no demolition, temporaries etc)
- Efficient design (reduced footprint)
- Stand-alone block (less disruption to school)
- New sports hall available for community use outside of school hours
- Sports Hall near the existing school car park (also available for community use)
- 3 storey block further from residents

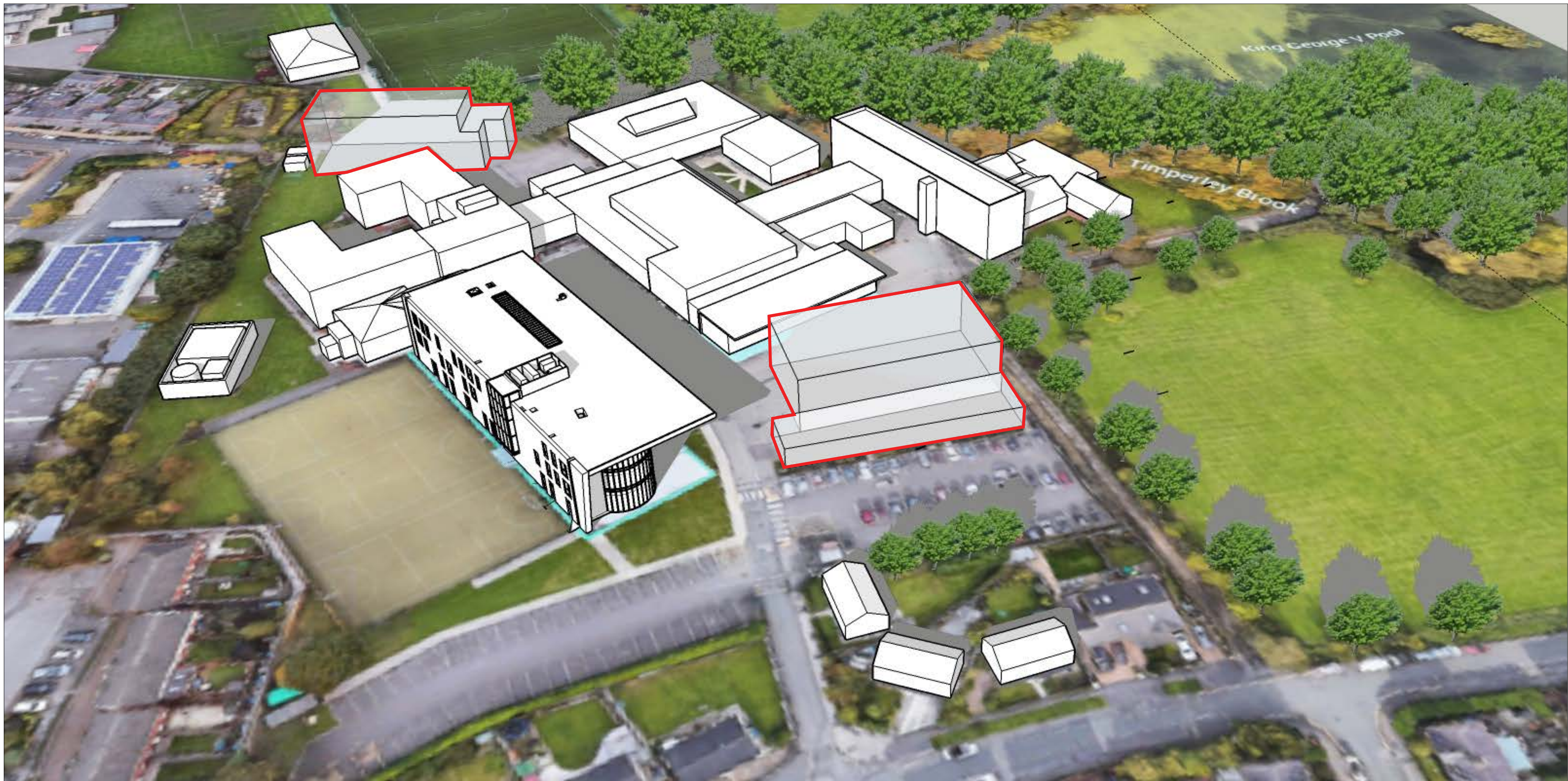
### Disadvantages of this location:

- Overdeveloped school site
- Relocation of pupil recreation space (reduced)
- Proximity to residents
- Daylight issues with existing buildings
- Will disrupt student entry, exit and recreation opportunities
- Staff parking will need to move on to public roads during construction
- School bus stops may need to move outside of the school site during and after construction

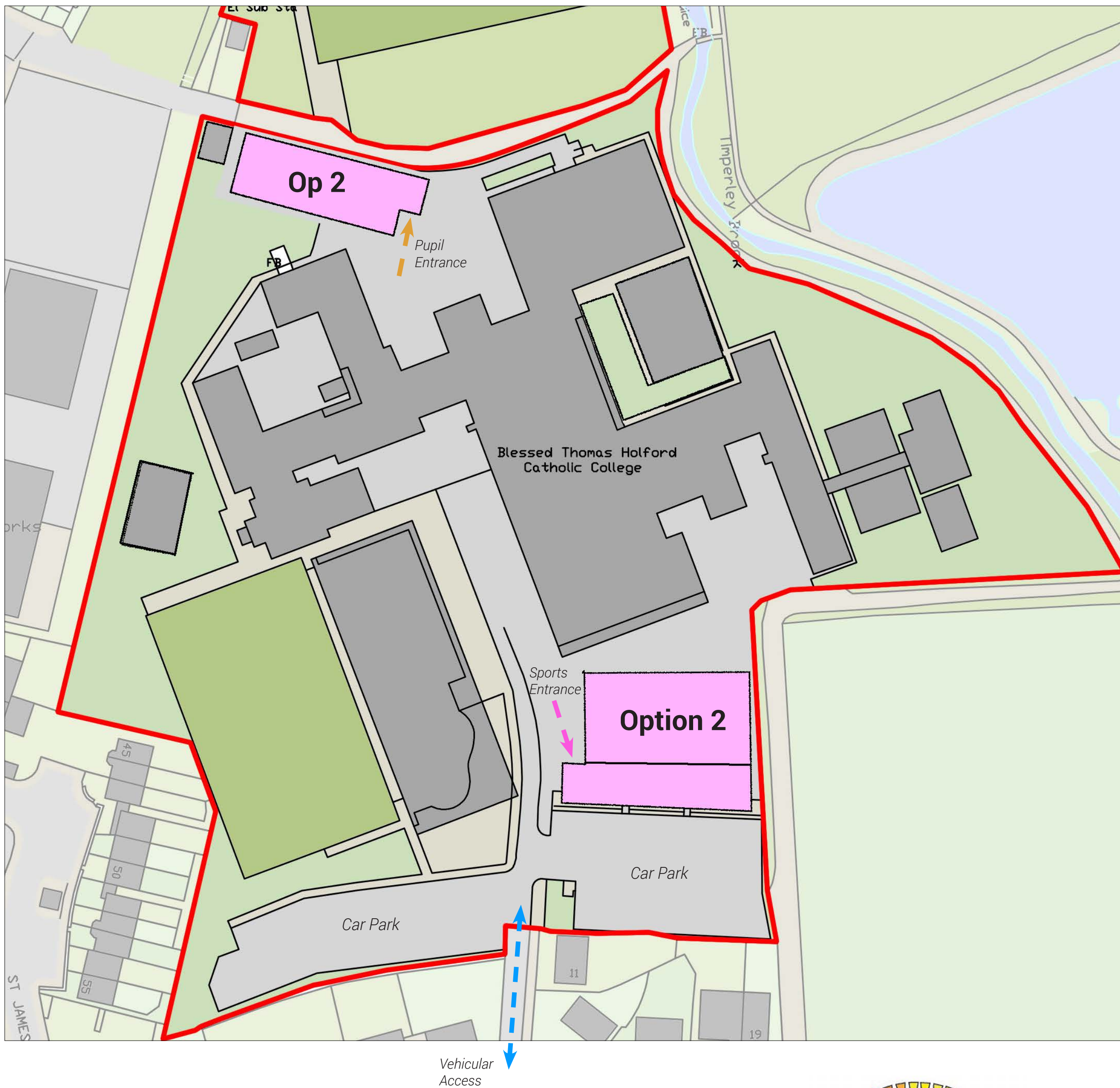


# Proposed new Teaching and Sports Building at Blessed Thomas Holford Catholic College

## Proposed 2 - Schools Hard Play Area & Split Buildings



Indicative massing model of option 2 location



### Advantages of this location:

- Within site boundary
- Clean site (no demolition, temporaries etc)
- Efficient design (reduced footprint)
- New sports hall available for community use outside of school hours
- Sports Hall near the existing school car park (also available for community use)
- 3 storey block further from residents
- Reduced massing to the front of the site compared to location 1

### Disadvantages of this location:

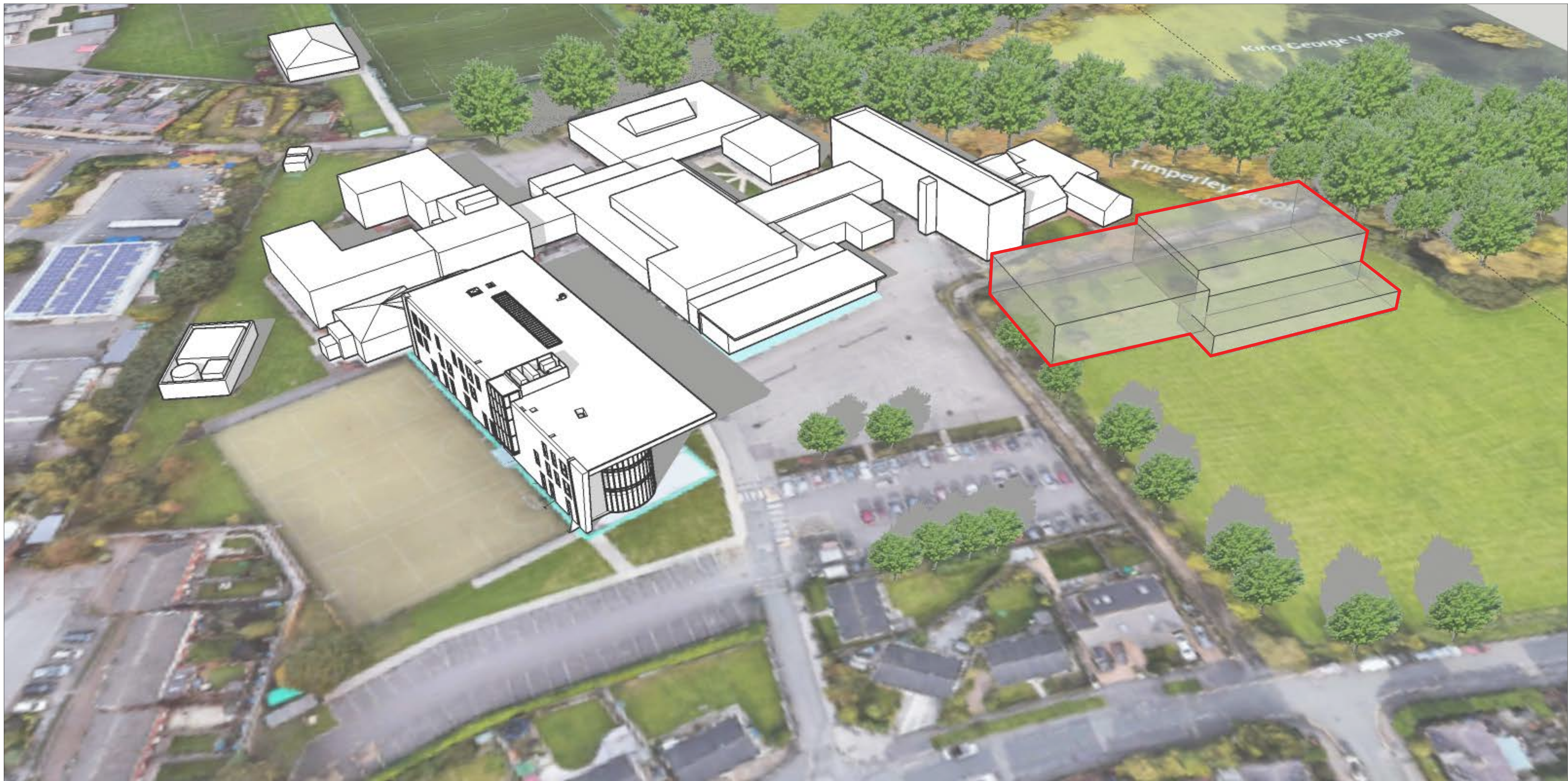
- Overdeveloped school site
- 2 Stand-alone blocks more disruption to school
- Relocation of pupil recreation space (reduced)
- Proximity to residents
- Daylight issues with existing buildings
- Will disrupt student entry, exit and recreation opportunities
- Staff parking will need to move on to public roads during construction
- School bus stops may need to move outside of the school site during and after construction



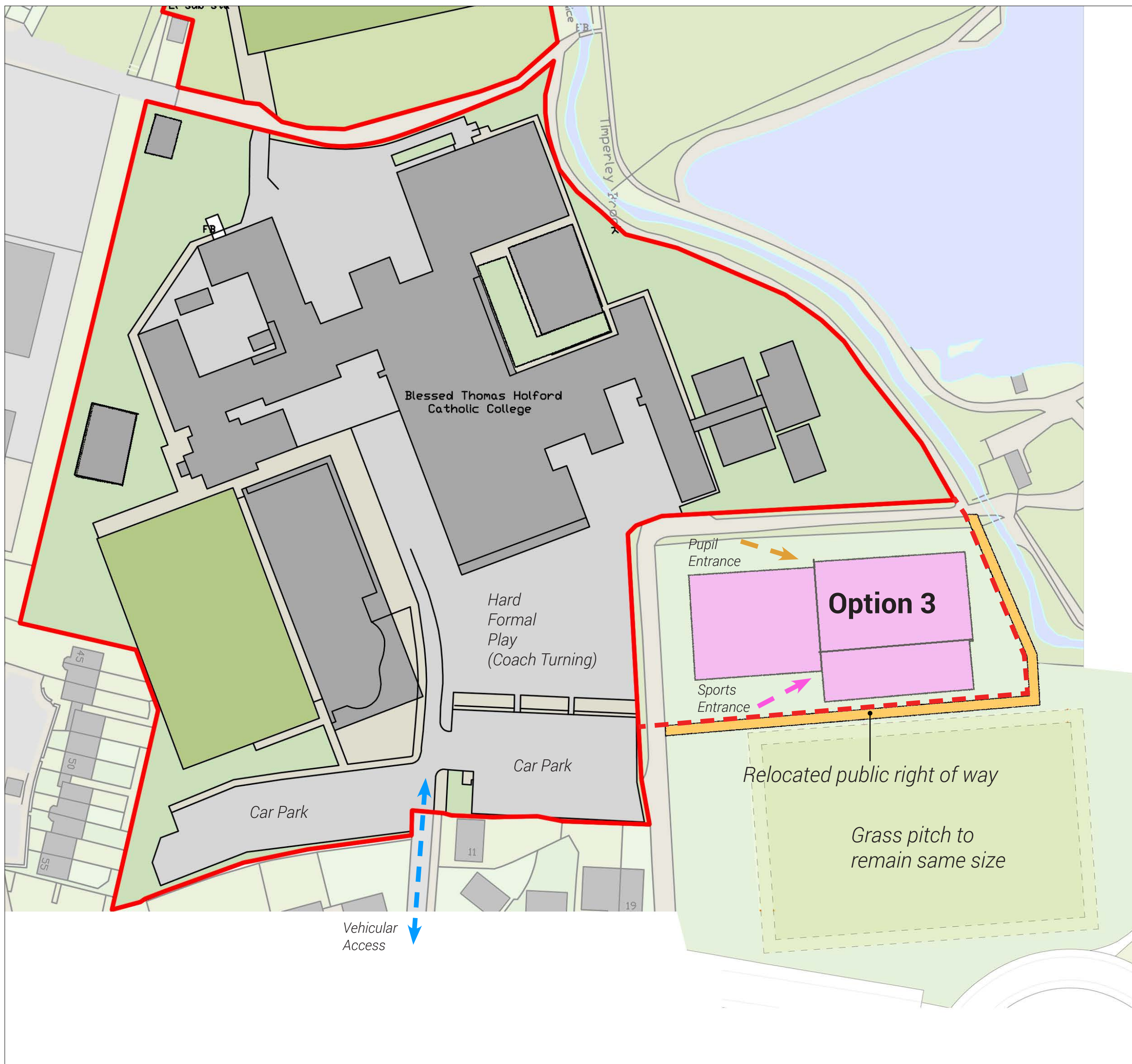


# Proposed new Teaching and Sports Building at Blessed Thomas Holford Catholic College

## Proposed 3 - Public Open Space



Indicative massing model of option 3 location



Indicative site plan of option 3 location

### Advantages of this location:

- Does not disrupt the day to day operations of the school – teaching, recreation, entry, exit etc
- Near enough to the main school buildings to not feel too isolated
- Clean site (no demolition, temporaries etc)
- Efficient design (reduced footprint)
- Stand-alone block (less disruption to school)
- Reduced height of classroom block
- Not too close to any residential properties
- New sports hall available for community use outside of school hours
- Sports Hall near the existing school car park (also available for community use)

### Disadvantages of this location:

- Outside site boundary
- Increased programme for consultation
- Increased risk regarding approvals
- Loss of public open space though football pitch and children's play area are unaffected
- Public Right of Way separates new block (safeguarding issue)

