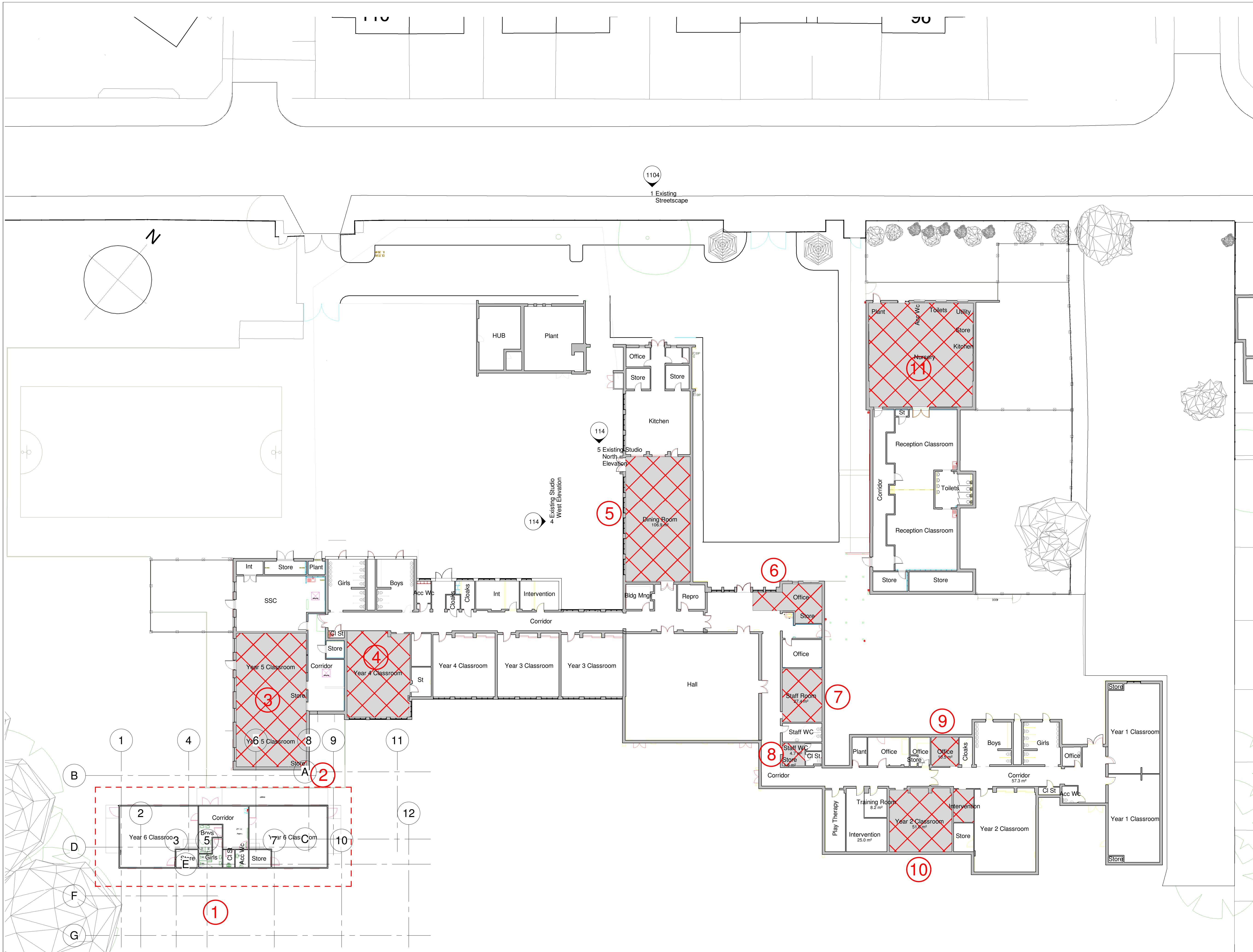


○ BOWKER SADLER PARTNERSHIP LIMITED  
 ■ THIS DRAWING IS THE SUBJECT OF COPYRIGHT WHICH VESTS IN BOWKER SADLER PARTNERSHIP LIMITED. IT IS AN INFRINGEMENT OF COPYRIGHT TO REPRODUCE THIS DRAWING, BY WHATEVER MEANS, INCLUDING ELECTRONIC, WITHOUT THE EXPRESS WRITTEN CONSENT OF BOWKER SADLER PARTNERSHIP LIMITED WHICH RESERVES ALL ITS RIGHTS.  
 BOWKER SADLER PARTNERSHIP LIMITED ASSERTS ITS RIGHTS TO BE IDENTIFIED AS THE AUTHOR OF THIS DESIGN.  
 ■ DRAWING NOT TO BE SCALED.  
 ■ REPORT ERRORS & OMISSIONS TO ARCHITECT.  
 ■ CHECK ALL DIMENSIONS ON SITE.  
 ■ DRAWING TO BE READ IN CONJUNCTION WITH THE HEALTH AND SAFETY PLAN AND ALL RELEVANT RISK ASSESSMENTS

1. Removal of existing mobile classrooms
2. Removal of existing glazed canopy
3. Yr 5 classroom converted to wc, shower, intervention, store and office space. End classroom changed to SSC
4. Conversion of classroom into staff room with external door.
5. Opening up of dining room wall to insert sliding folding wall.
6. Opening up of front office, removal of desk and forming larger office.
7. Removal of existing staffroom fittings and convert to head's office
8. Conversion of male wc and store into accessible wc
9. Removal of desking to convert room to an intervention space
10. Conversion of classroom into Food Tech and door added to adjacent store
11. Refurbishment of Existing Nursery into Reception classroom.



REV.	DATE	DRN.	CHKD.
B	17/05/21	AT	Nursery refurb added and text amended to client comments
A	12/05/21	AT	Plan amended to reflect client comments/requirements

PROJECT: The Firs Primary School

CLIENT: Bowker Sadler Architecture

DRAWING: Scope Plan to Existing

SCALE: 1:200 SHEET SIZE: @ A1 DRAWN: AT CHECKED: Checker DATE: 05/21

BOWKER SADLER ARCHITECTURE

A: Hatherlow House, Hatherlow, Romiley, Stockport SK6 3DY  
 T: 0161 406 7333  
 E: office@bowker-sadler.co.uk  
 W: www.bowker-sadler.co.uk

JOB No: 21 024 DRAWING No: 1002 REVISION: B

STATUS: Planning