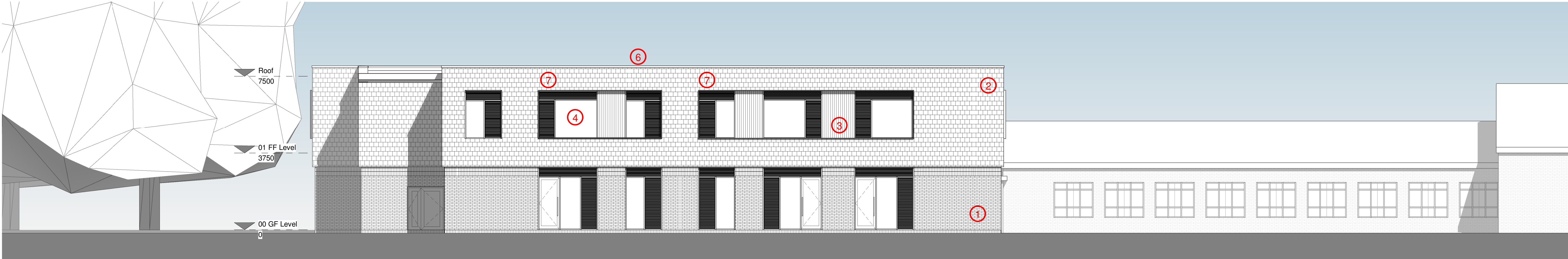
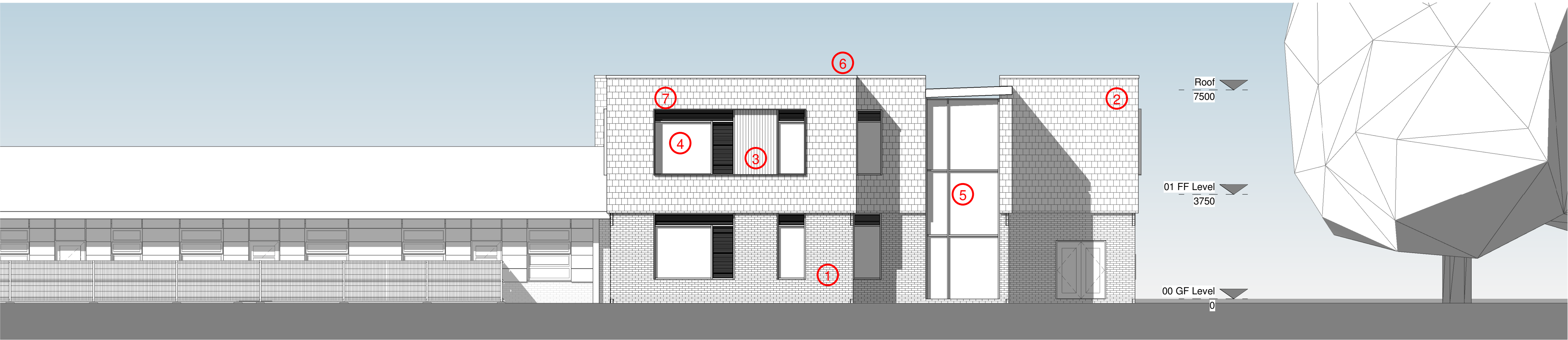


Proposed North Elevation
1 : 100



Proposed South Elevation
1 : 100



Proposed West Elevation
1 : 100



Proposed East Elevation
1 : 100

○ BOWKER SADLER PARTNERSHIP LIMITED
■ THIS DRAWING IS THE SUBJECT OF COPYRIGHT WHICH VESTS IN BOWKER SADLER PARTNERSHIP LIMITED. IT IS AN INFRINGEMENT OF COPYRIGHT TO REPRODUCE THIS DRAWING, BY WHATEVER MEANS, INCLUDING ELECTRONIC, WITHOUT THE EXPRESS WRITTEN CONSENT OF BOWKER SADLER PARTNERSHIP LIMITED WHICH RESERVES ALL ITS RIGHTS
BOWKER SADLER PARTNERSHIP LIMITED ASSERTS ITS RIGHTS TO BE IDENTIFIED AS THE AUTHOR OF THIS DESIGN
■ DRAWING NOT TO BE SCALED.
■ REPORT ERRORS & OMISSIONS TO ARCHITECT.
■ CHECK ALL DIMENSIONS ON SITE
■ DRAWING TO BE READ IN CONJUNCTION WITH THE HEALTH AND SAFETY PLAN AND ALL RELEVANT RISK ASSESSMENTS

REV.	DATE	DRN.	CHKD.
PROJECT The Firs Primary School			
CLIENT Bowker Sadler Architecture			
DRAWING Proposed Elevations			
SCALE 1 : 100	SHEET SIZE @ A1	DRAWN AT	CHECKED Checker
DATE 06/21			
BOWKER SADLER ARCHITECTURE A: Hatherlow House, Hatherlow, Romiley, Stockport SK6 3DY T: 0161 406 7333 E: office@bowker-sadler.co.uk W: www.bowker-sadler.co.uk			
JOB No 21 024	DRAWING No 1013	REVISION	
STATUS		Planning	

- Materials Key
- 1 Buff brickwork with soldier course detail
 - 2 Hung Slate
 - 3 Timber boarding
 - 4 Aluminium windows with integrated louvres
 - 5 Curtain walling
 - 6 PPC aluminium coping
 - 7 PPC projecting aluminium flashing