

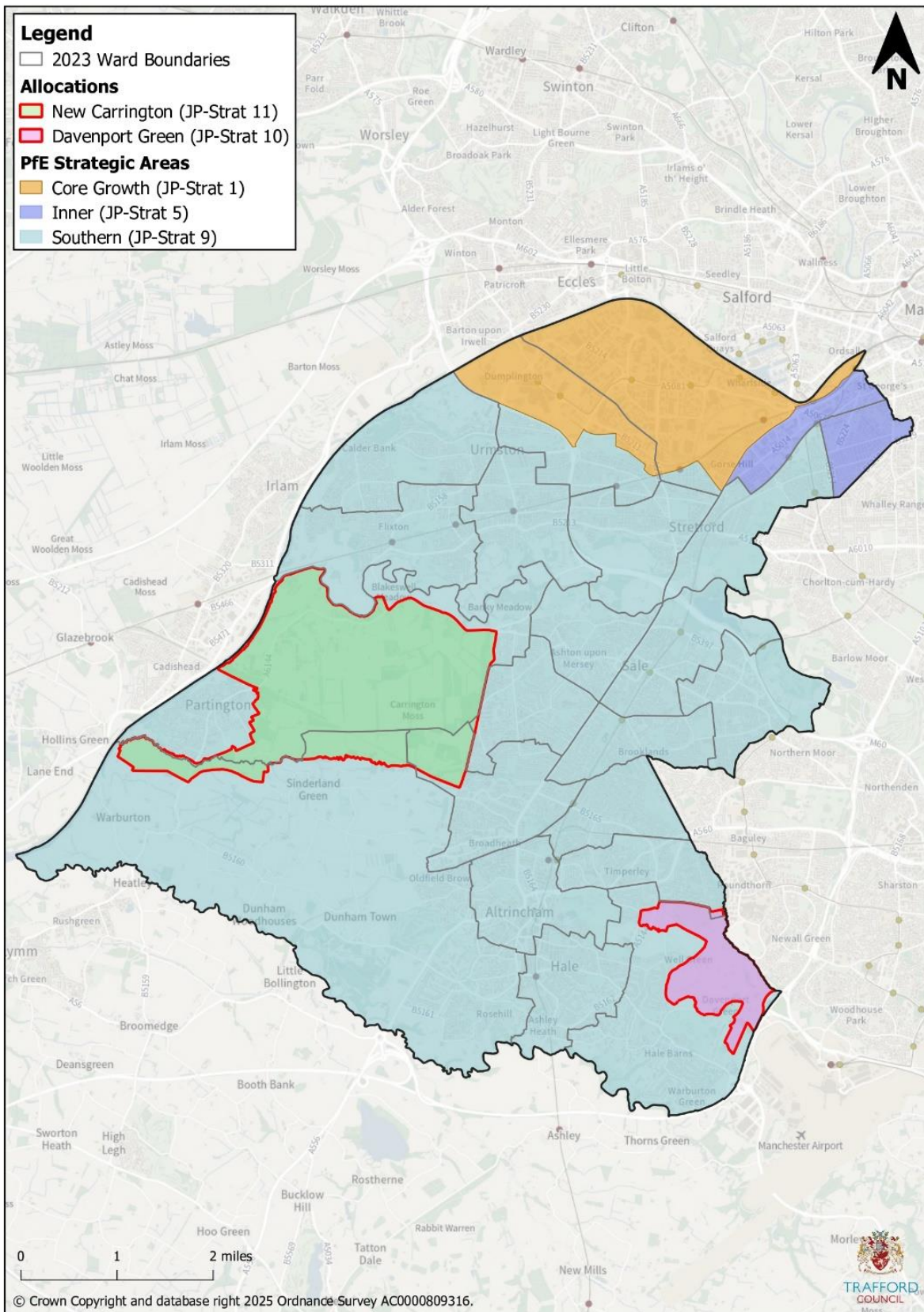
Inner Areas

Policy ST2: Inner Areas (Trafford)

- A. The Places for Everyone Spatial Strategy – Inner Area covers the area shown on Figure 2-2 in Trafford and as defined on the Policies Map. PfE Policy JP-Strat 5 is relevant to this area.
- B. Development in the Inner Area:
 - i. Will be predominantly residential schemes
 - ii. Will be well integrated with existing communities
 - iii. will enhance the place and facilitate their regeneration.



Figure 2-2: Places for Everyone Strategic Areas in Trafford





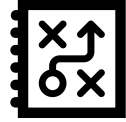
- 2.24. The Inner Areas in Trafford includes land within the Gorse Hill and Cornbrook; and Old Trafford wards.
- a) Within the Gorse Hill and Cornbrook Ward the area to the south of the Manchester-Liverpool Railway line is within the Inner Area.
 - b) The entirety of the land within the Old Trafford ward is within the Inner Area.
- 2.25. The Inner Area within Trafford is made up of existing residential neighbourhoods where new development opportunities can be well integrated with existing communities. Proposals in the Inner Area will be predominantly residential schemes that will enhance the quality of place and local character.
- 2.26. Inner Areas are already sustainable, well-connected locations but new infrastructure provision, high quality open spaces and improved access to the wider green infrastructure network will facilitate the growth of these areas, increasing their capacity where appropriate.
- 2.27. The Civic Quarter Area Action Plan is an adopted part of Trafford's Development Plan, looking to deliver up to 4,000 new homes and up to 50,000 sq m of commercial floorspace in an area at the south eastern edge of the Gorse Hill and Cornbrook ward.
- 2.28. At the northern tip of the Inner Area in Trafford, bounded by the Bridgewater Canal to the north, are a number of existing commercial uses as well as the Empress Conservation Area. This area offers development opportunities alongside heritage protection and restoration in an environment with strong local character and heritage connections.

Places for Everyone Links

JP-Strat 5

Relevant Strategic Objectives

SO1, SO3, SO4, SO8 and SO9



Consultation Question 2-2

Do you support Policy ST2? Are there any changes required which would improve the policy? Please provide any supporting evidence which you think is relevant.