

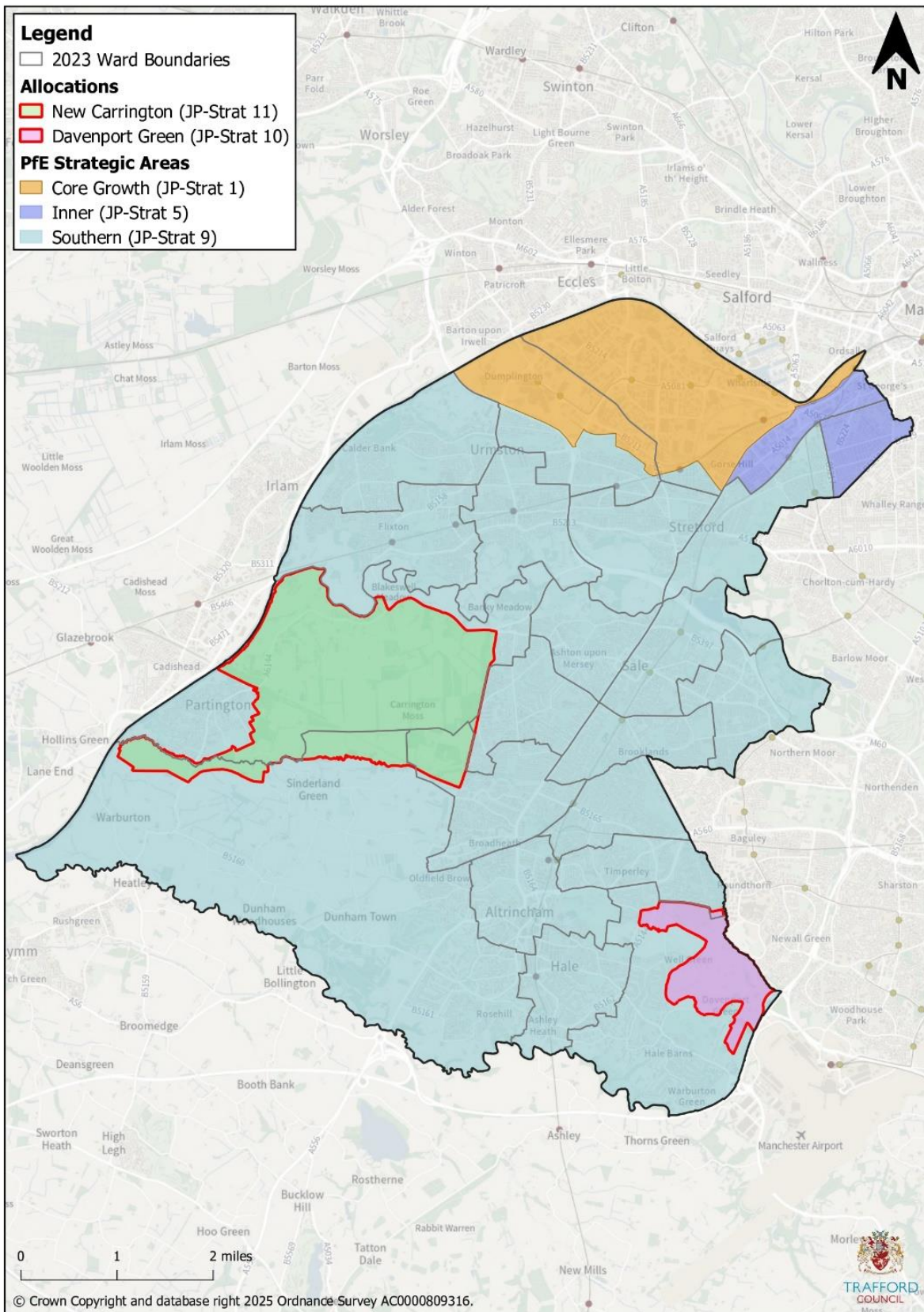
## Southern Areas

### Policy ST3: Southern Areas (Trafford)

- A. The Places for Everyone Spatial Strategy – Southern Areas covers the area shown on Figure 2-2 in Trafford. PfE Policy JP-Strat 9 is relevant to this area.
- B. Development in the Southern Areas:
  - i. will not compromise its economic competitiveness whilst not impacting distinctive local neighbourhood characteristics and/or environmental attractiveness.
  - ii. will make the most use of previously developed land.
  - iii. will promote the roles of Trafford's town centres and other assets including education and training facilities.

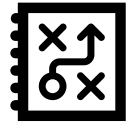


Figure 2-2: Places for Everyone Strategic Areas in Trafford





- 2.29. The Southern Areas in Trafford covers all areas of Trafford outside of the Core Growth Area (ST3) and Inner Areas (ST2).
- 2.30. The PfE Southern Areas within Trafford are characterised by residential neighbourhoods, some with high house prices and relatively high incomes, as well as significant affordability issues alongside more deprived neighbourhoods.
- 2.31. Within the Southern Areas, PfE identifies and includes policies for the Manchester Airport area and New Carrington. Both of which are strategically important locations within Trafford.
- 2.32. The Manchester Airport area includes the Davenport Green (Timperley Wedge) allocated in Places for Everyone Policy JPA 3.2 for 2,500 homes and 60,000 sqm employment floorspace. A comprehensive Masterplan is being prepared for the site which will guide the delivery of development, alongside the require infrastructure.
- 2.33. New Carrington is one of the largest allocations in Greater Manchester, Places for Everyone policy JPA30, for 5,000 homes and 350,000 sqm employment floorspace. As with Davenport Green, a comprehensive Masterplan is being prepared for the site which will guide the development and also secure significant improvements to blue and green infrastructure in the area.
- 2.34. The Southern Area is home to all of Trafford's Town Centres: Altrincham; Sale; Stretford; and Urmston. Altrincham is identified in Places for Everyone as being Trafford's Main Town Centre, being the prime location for shops and services, a major source of employment and leisure opportunities.
- 2.35. The economic potential of Trafford's Town Centres will be maximised alongside associated transport infrastructure, improving connections and accessibility by public transport, cycling, wheeling and walking, ensuring access to employment opportunities.



### **Places for Everyone Links**

JP-Strat 9; JP-Strat 10; JP-Strat 11 and JP-Strat 12

### **Relevant Strategic Objectives**

SO1; SO3, SO4; SO8 and SO9

### **Consultation Question 2-3**

Do you support Policy ST3? Are there any changes required which would improve the policy? Please provide any supporting evidence which you think is relevant.