



National Infrastructure Schemes

Policy TM9: Potential Future Rail Route

- A. The Council will support the provision of a rail route which runs to the west of the M56, connecting the Manchester Airport area to the City Centre, via a tunnel. This includes a new rail station to the west of the M56 / Manchester Airport, of high-quality design and with good quality access by active travel and public transport to surrounding communities.

Places for Everyone Links

JP-C1

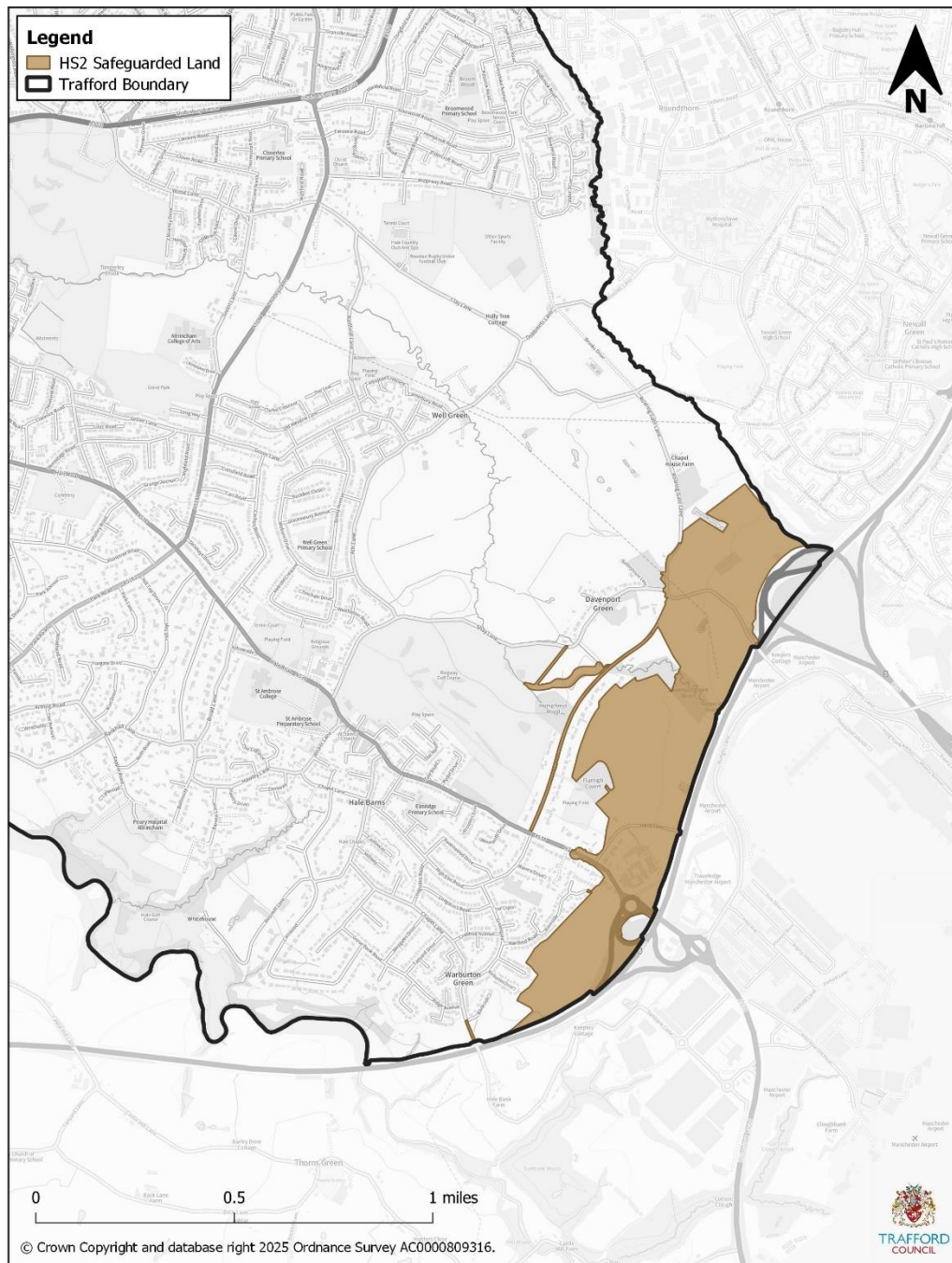
Relevant Strategic Objectives

SO4 and SO8

- 6.42. In October 2023, the Government outlined significant changes to the High Speed Two (HS2) project, which included the cancellation of Phase 2b. Within Trafford Phase 2b included provision of a high-speed rail line to the west of the M56, a new high speed rail station at Manchester Airport and a tunnel portal to provide an underground connection into central Manchester. The HS2 safeguarding directions remain in place, and these are shown on Figure 6-8.



Figure 6-8: HS2 safeguarded areas



- 6.43. Whilst HS2 Phase 2b was cancelled, Trafford Council remains supportive of a new rail route in this area providing a link to Manchester via Manchester Airport and associated station located within the Trafford boundary. The Council will continue to engage in discussions with stakeholders.



Consultation Question 6-9

Do you support Policy TM9? Are there any changes required which would improve the policy? Please provide any supporting evidence which you think is relevant.