



## **Wetlands Nature Improvement Areas**

### **Policy GI3: Great Manchester Wetlands Nature Improvement Area (NIA)**

- A. Development proposals within the Great Manchester Wetlands NIA must have regard to the objectives and priorities of the area to deliver enhanced ecosystem services.
- B. Proposals for wetland improvement and restoration, a key priority of the NIA, will be supported.

### **Places for Everyone Links**

Policy JP-G2; JP-G4; and JPA 30

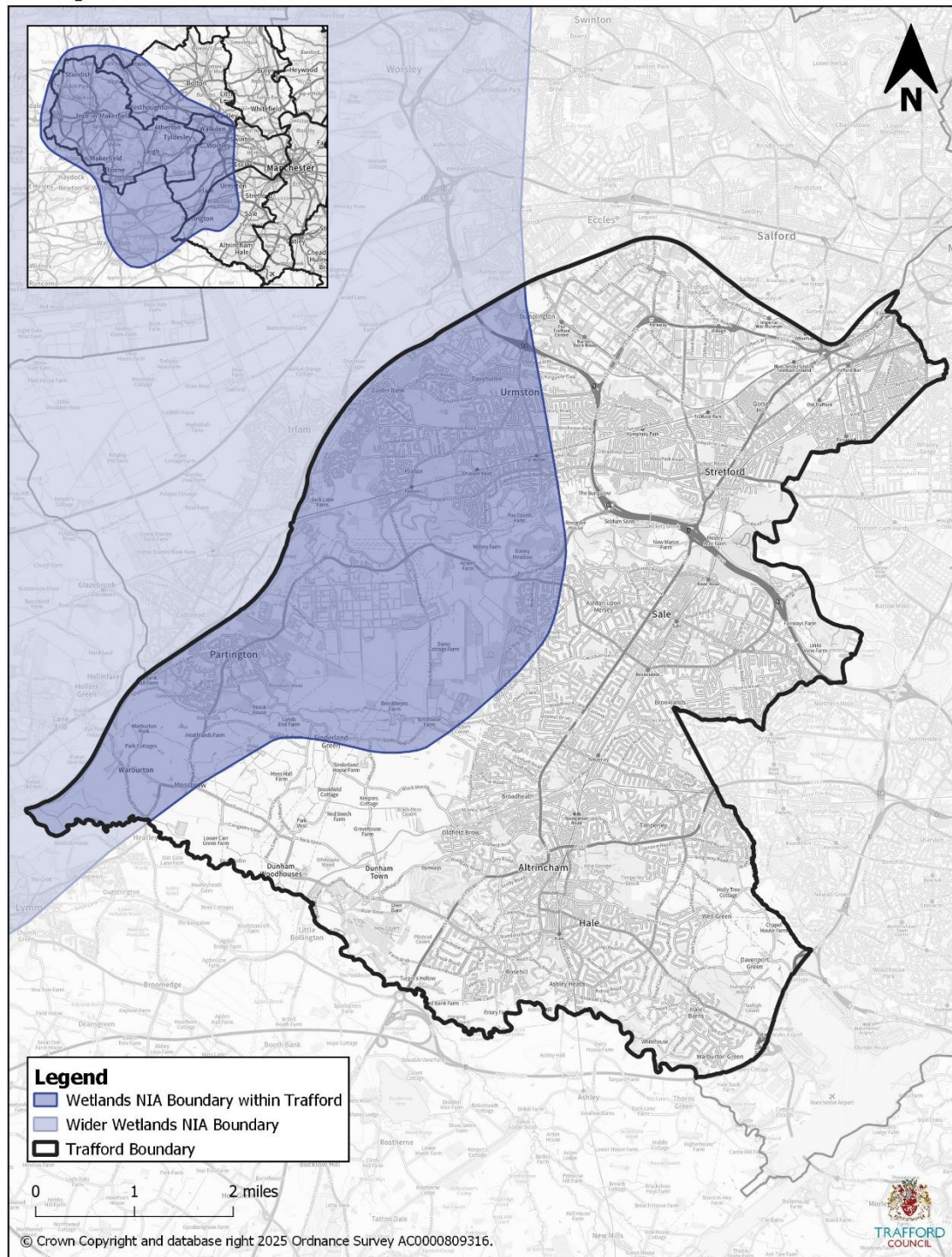
### **Relevant Strategic Objectives**

SO2; SO3; SO7

- 8.15. Nature Improvement Areas (NIAs) seek to create joined up and resilient ecological networks at a landscape scale. The Great Manchester NIA is a partnership of local authorities, local communities and landowners, the private sector and conservation organisations, with support from government bodies, including Natural England.
- 8.16. As set out in Places for Everyone policy JP-G2 Green Infrastructure Network, the Great Manchester Wetlands Nature Improvement Area (NIA) is identified as a 'Green Infrastructure Opportunity Area'. The opportunity areas are identified as having particular potential for delivering improvements to the Green Infrastructure Network in Trafford and beyond.



Figure 8-3: Great Manchester Wetlands Nature Improvement Area



- 8.17. The Great Manchester Wetlands Nature Improvement Area (NIA) includes a range of internationally, nationally and locally designated nature conservation sites. The NIA seeks to deliver a living landscape between Greater Manchester and Merseyside through identified wildlife corridors



and through the complementary creation of, or restoration of, wetland habitat.

- 8.18. The NIA area within Trafford largely relates to the lowland and mossland areas of Carrington, Partington and Dunham, as well as areas in west Trafford along the Manchester Ship Canal Corridor. It is part of a wider peatland area that spans the Mersey Valley, which includes Manchester mosses and other wetlands. Much of the area within Trafford has historically been used for agricultural and industrial activities, notably Carrington Moss which was used for the deposition of night soil. As a result there are significant opportunities to enhance habitats and this wider green infrastructure network in the area.
- 8.19. The NIA in Trafford also includes part of the New Carrington strategic allocation (PfE Policy JPA30) and the allocation masterplan will therefore identify opportunities to enhance and / or restore wetland habitats, having regard to the wider NIA objectives.

### **Consultation Question 8-3**

Do you support Policy GI3? Are there any changes required which would improve the policy? Please provide any supporting evidence which you think is relevant.